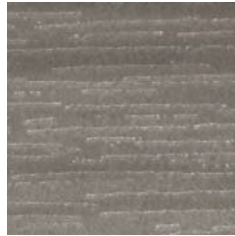


2011 Color Offering

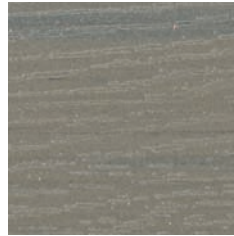
Wood tones (with "streaking" effect)



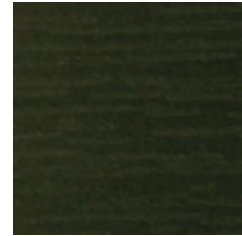
American Cherry



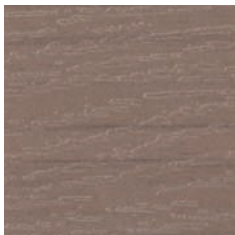
Barnwood



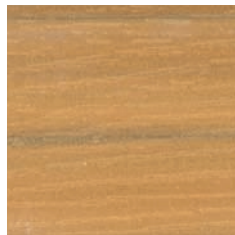
Coastal Gray



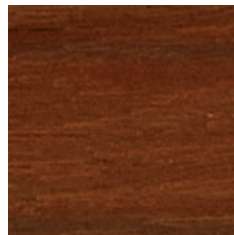
Hunter Green



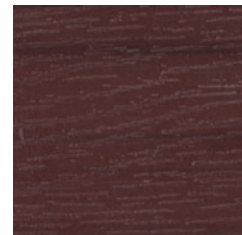
Gray Wolf



Light Teak



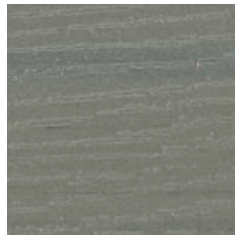
Mahogany



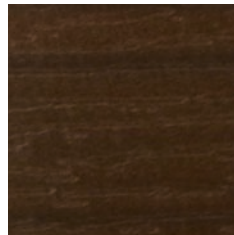
Purple Rain



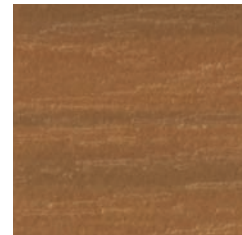
Redwood



Slate Gray



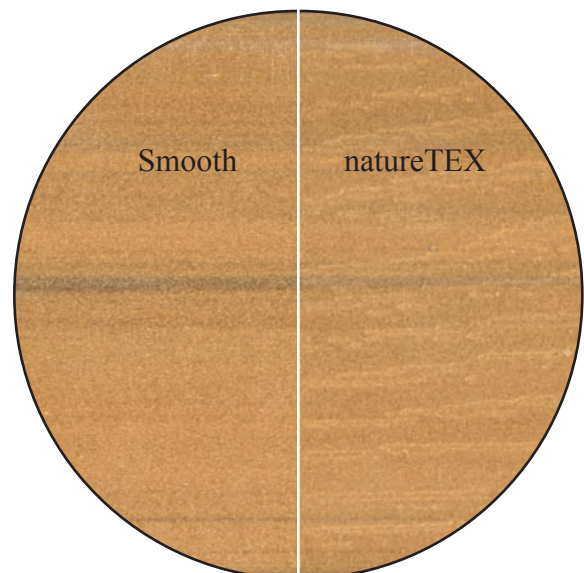
Teak



Toffee

The close-up image (right) shows the "color streaking" effect and also shows our two surface options (smooth and natureTEX).

All 35 of our standard colors are available in either a smooth or natureTEX (embossed texture) finish.



2011 Color Offering

Solid wood tones & colors (no color "streaking effect")



Almond



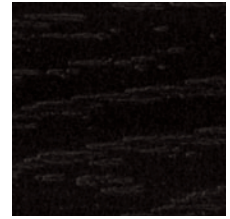
Arctic White



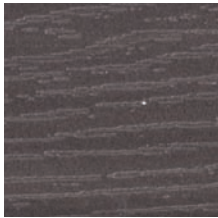
Barn Red



Beige



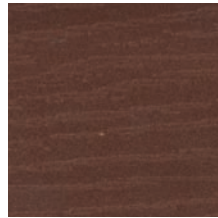
Black



Charcoal



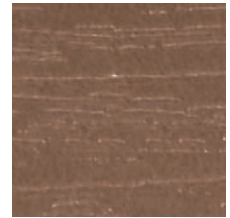
Charcoal Brown



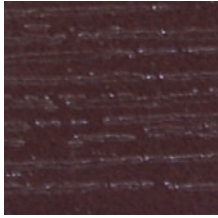
Chestnut Brown



Clay



Coffee



Cordovan



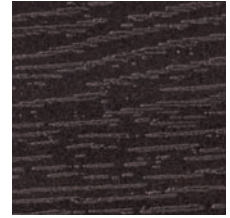
Dark Gray



Forest Green



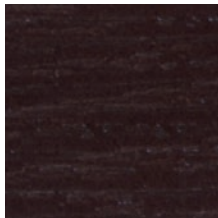
Glacier Gray



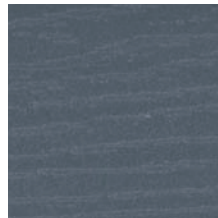
Graphite



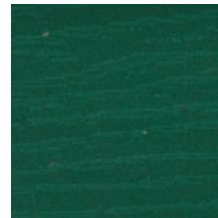
Navy Blue



Smoke



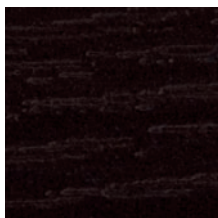
Steel Blue



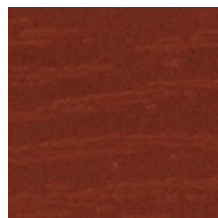
Turf Green



Weathered Oak*



Black_RP*



Weathered Cherry*



Weathered Wenge*

*Uses 99% recycle, color varies within lots.